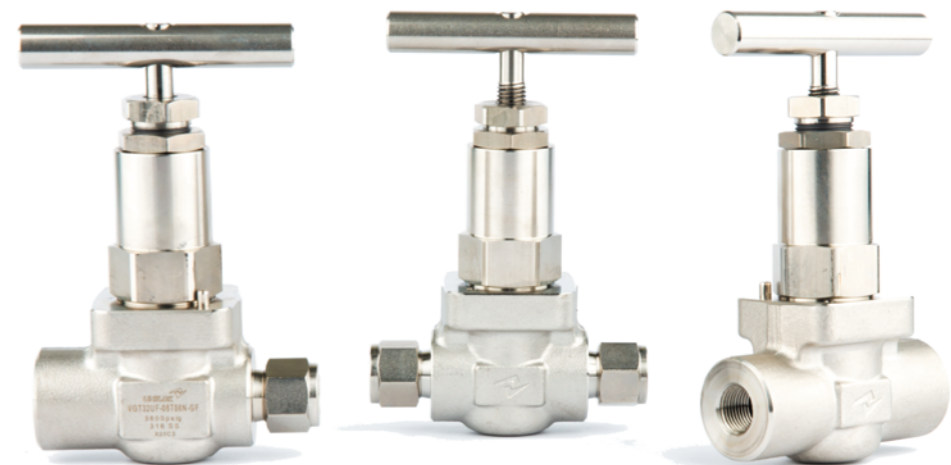
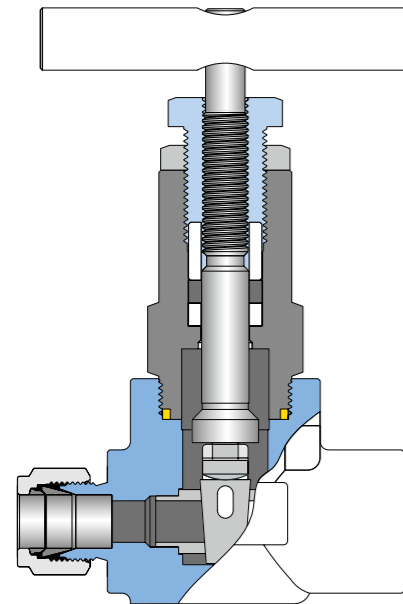


INSTRUMENT

Gate Valve VGT3



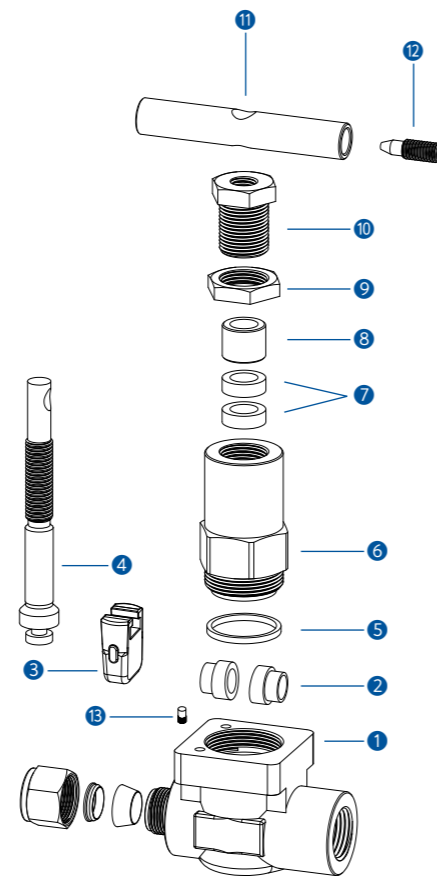


Features

- Design Spec : ANSI/ASME B16.34
- Pressure Rating : Up to 3,600 psig (248bar) @21°C
- Temperature Rating :
From -23°C to 232°C (-65°F to 350°F) with PTFE packing, up to 648°C (1200°F) with grafoil packing
- Body Materials : Standard 316 stainless steel, A105 and alloy400
- Compact forged body design
- Back seat design provides anti-blow out of stem and seal
- The hard faced seat ring and wedge enable longer life cycle
- Packing bolt allows easy packing adjustment for leak tight seal
- Handle Low operating torques

Materials of Construction

No.	Description	Materials
1	Body	316SS
2	SEAT RING	316SS
3	DISC	CF8M
4	STEM	316SS
5	BONNET PACKING	Grafoil
6	BONNET	316SS
7	PACKING	PTFE (Available Grafoil)
8	GLAND	316SS
9	LOCK NUT	316SS
10	PACKING BOLT	316SS
11	HANDLE	316SS
12	HANDLE SCREW	304SS
13	PIN	304SS



Cleaning

UNILOK valves are free from machine oils, loose particles and grease throughout the close cleaning process.

Testing

Every valve is 100% factory tested with air and nitrogen at 1000psig(69bar) for leakage at the seat and packing.

Each test is performed to a maximum allowable leak rate of 0.1scc/min.

Sour Environment Services

UNILOK tube comply with NACE MR-0175/ISO 15156 for sour oilfield application or NACE MR-0103 for petroleum refining operations.

To order, add-N to the end of part number.

Sour Environment Services

The packing adjustment may be required during the valve's service life.

Proper installation, materials compatibility, operation and maintenance of these valves are the responsibility of the user. The total system design must be taken into consideration to ensure optimal performance and safety.

How To Order

UNILOK VGT3 series gate valves are ordered by part number as shown below.



Valve Type	
GT3	INSTRUMENT GATE VALVE

Connection Type	
U	UNILOK Tube Fitting
F	Female NPT or ISO7/1(PT)
WS-	Socket Weld-Pipe

Connection Size						
Fractional(Inch) Tube O.D. Designation						
Tube O.D.	inch	1/4	3/8	1/2	3/4	1
	mm	6.35	9.52	12.70	19.05	25.40
Designator		04T	06T	08T	12T	16T

Metric Tube O.D. Designation						
Tube O.D.	mm	6	10	12	20	25
Designator		M06T	M10T	M12T	M20T	M25T

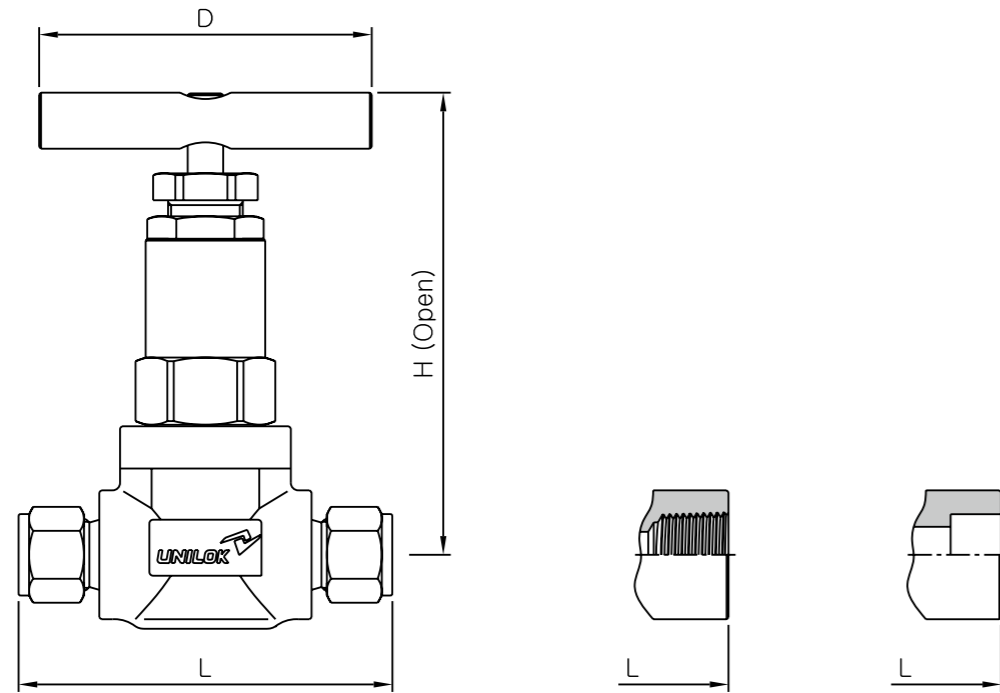
Pipe Size Designation (NPT or ISO7/1-PT)					
Pipe Size	1/4	3/8	1/2	3/4	1
Designator	04N/R	06N/R	08N/R	12N/R	16N/R

Weld Size Designation					
Pipe Size	1/4	3/8	1/2	3/4	1
Designator	04P	06P	08P	12P	16P

Body Materials	
SS	316 SS
MO	Alloy 400

NACE Application	
None	-
N	NACE Application

Packing Materials	
None	PTFE
GF	Grafoil



Ordering Information & Dimensions

Part No.	End Connections		Port	Orifice	Cv	Dimensions (mm)		
	Inlet	Outlet				L	H	D
VGT31	F-04N-	1/4" Female NPT	Full	6.4	2.6	70.0	100.0	64.0
	F-06N-	3/8" Female NPT	Reduced					
	U-06T-	3/8" UNILOK	Full			78.0		
	U-08T-	1/2" UNILOK				83.0		
	WS-04P-	1/4" Pipe SW	Reduced			70.0		
	WS-06P-	3/8" Pipe SW						
VGT32	F-06N-	3/8" Female NPT	Full	10.0	6.1	86.0	140.0	89.0
	F-08N-	1/2" Female NPT	Reduced			100.0		
	U-08T-	1/2" UNILOK				Full		
	U-10T-	5/8" UNILOK	Reduced					
	WS-06P-	3/8" Pipe SW				Full		
	WS-08P-	1/2" Pipe SW						
VGT33	F-08N-	1/2" Female NPT	Full	12.7	11.3	100.0	170.0	110.0
	F-12N-	3/4" Female NPT	Reduced			115.0		
	U-12T-	3/4" UNILOK				Full		
	U-16T-	1" UNILOK	Reduced					
	WS-08P-	1/2" Pipe SW				Full		
	WS-12P-	3/4" Pipe SW						
VGT34	F-12N-	3/4" Female NPT	Full	19.0	26.3	127.0	210.0	140.0
	F-16N-	1" Female NPT	Reduced			146.0		
	U-16T-	1" UNILOK				Full		
	WS-12P-	3/4" Pipe SW	Reduced					
	WS-16P-	1" Pipe SW						

ISO7/1 Tapered Threads (PT) are available for all fractional sizes of VGT3 series valves. Add "R" as a suffix instead of "N"

Dimensions are for reference only and are subject to change without prior notice.